



2025

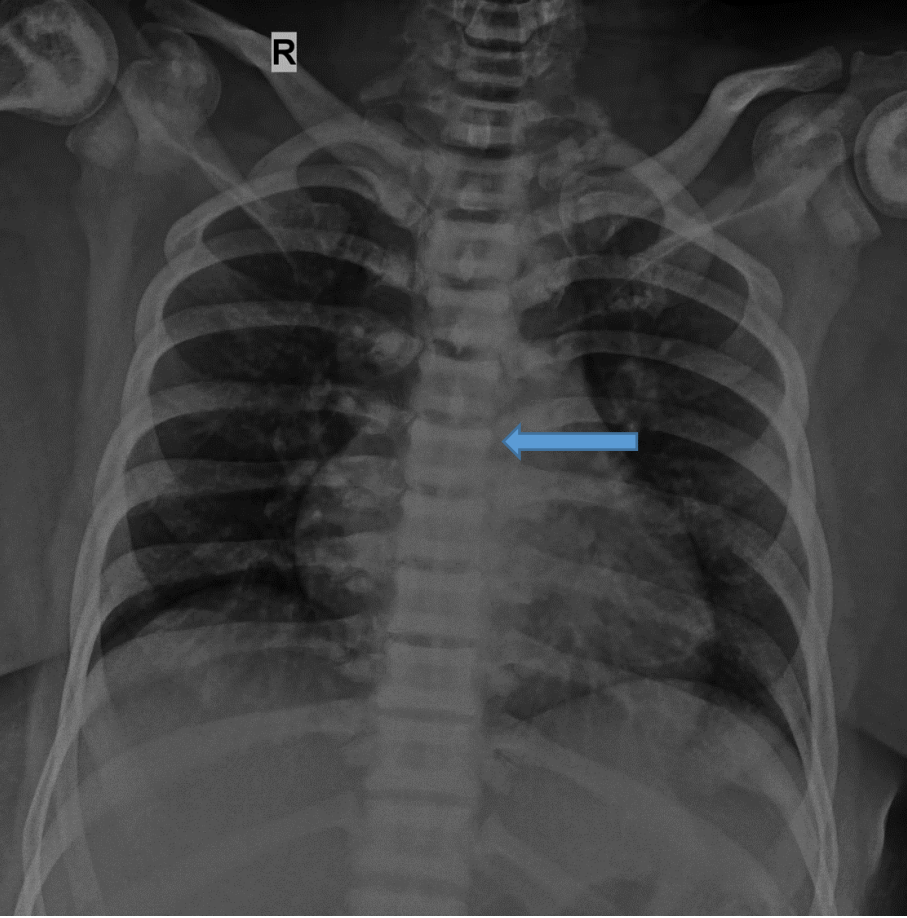
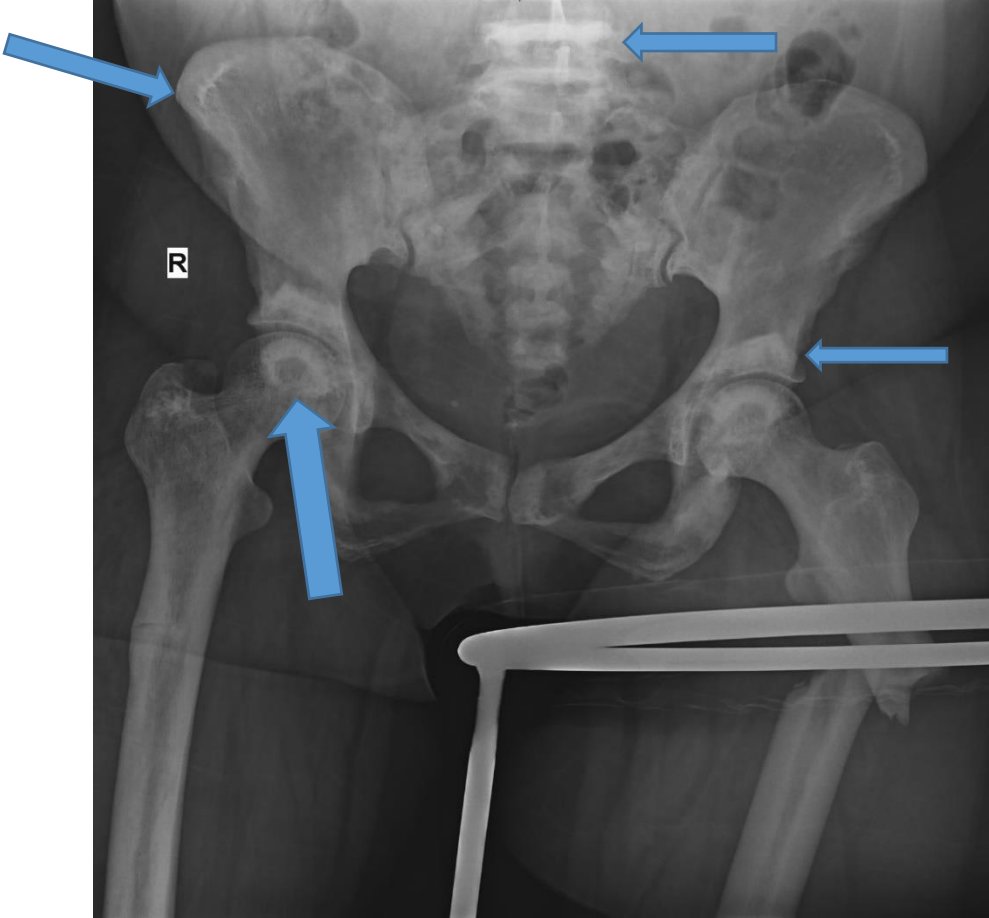
KARNATAKA RADIOLOGY EDUCATION PROGRAM

**Apollo Hospitals, Bengaluru**  
Contributor of the Series

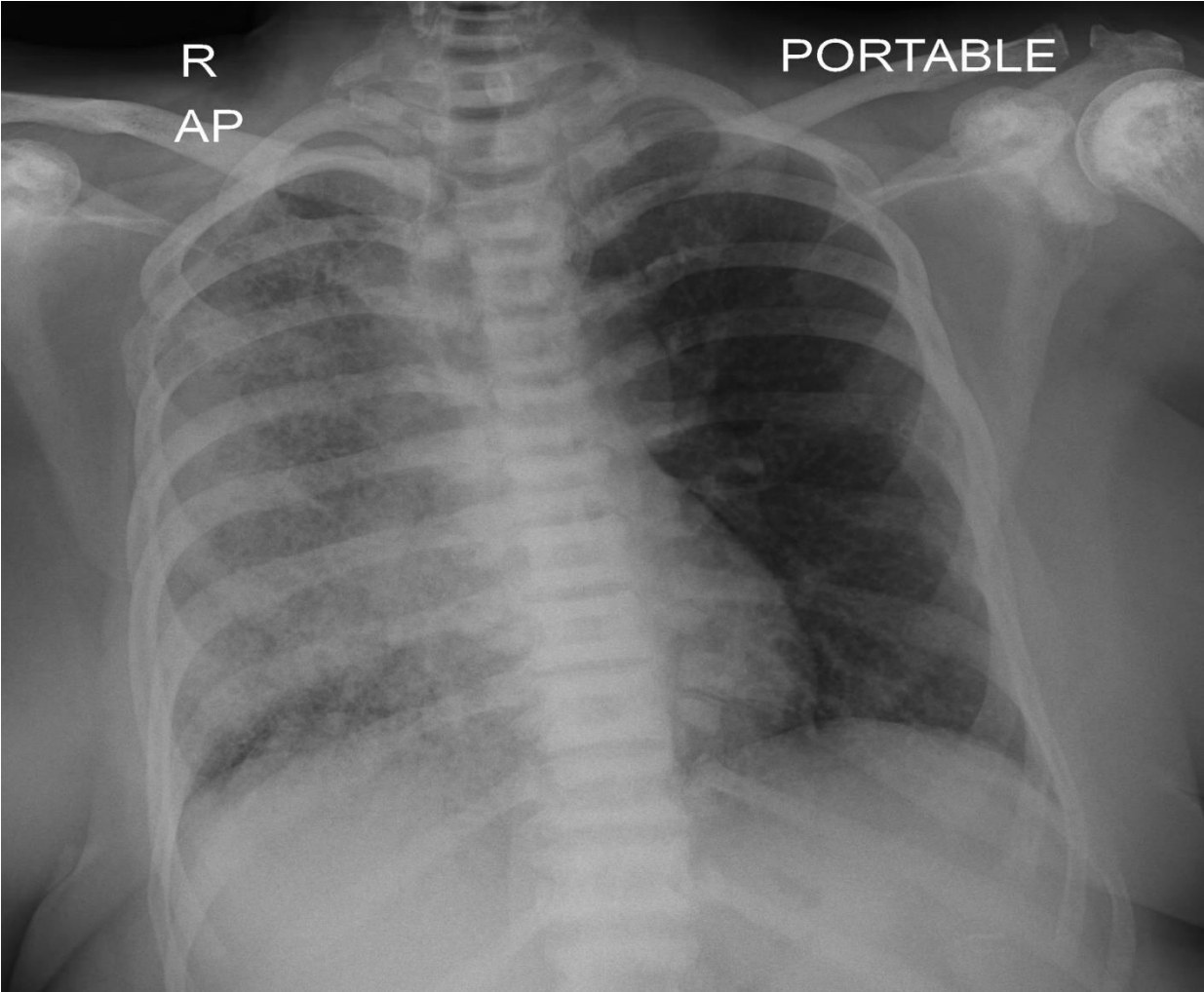
# Case 17

- Middle aged female with left upper femoral femur fracture
- Pelvic AP radiograph shows displaced fracture; multiple other sclerotic lesions are seen in the pelvic bones, some with bone in bone appearance
- Chest radiograph AP shows diffusely sclerotic bones, end plate sclerotic changes in entire visualized spine

Jan 2020 -



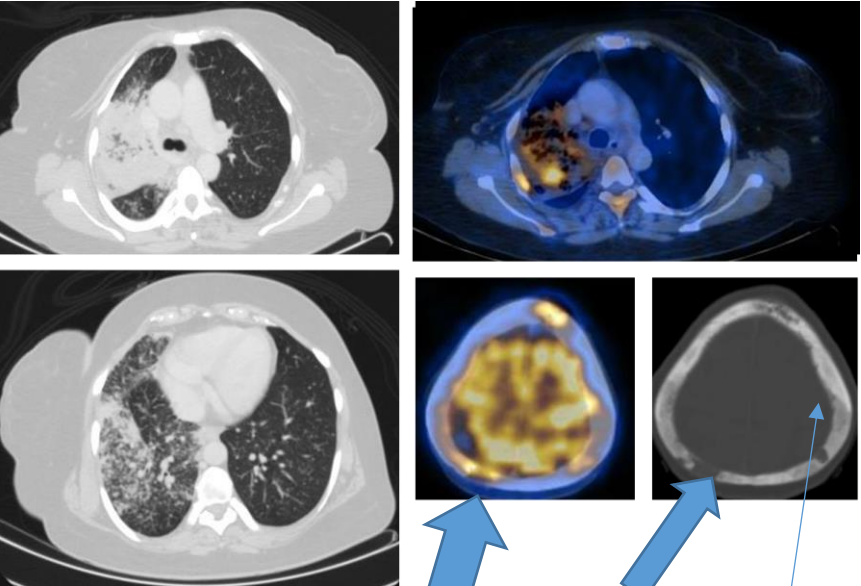
Nov 2024



Osteopetrosis

Same pt presented four years later with breathlessness  
CT chest showed irregular area of consolidation in RUL  
Bx – adenocarcinoma; EGFR positive  
PET CT – extensive disease involvement of lungs with bone  
metastases demonstrating abnormal tracer uptake  
Previously documented sclerotic bone lesions  
(osteopetrosis) are negative on PET  
Treated with TKI  
Follow up scan demonstrates significant regression of all  
lesions and the osteopetrotic lesions remain unaltered

Nov 2024

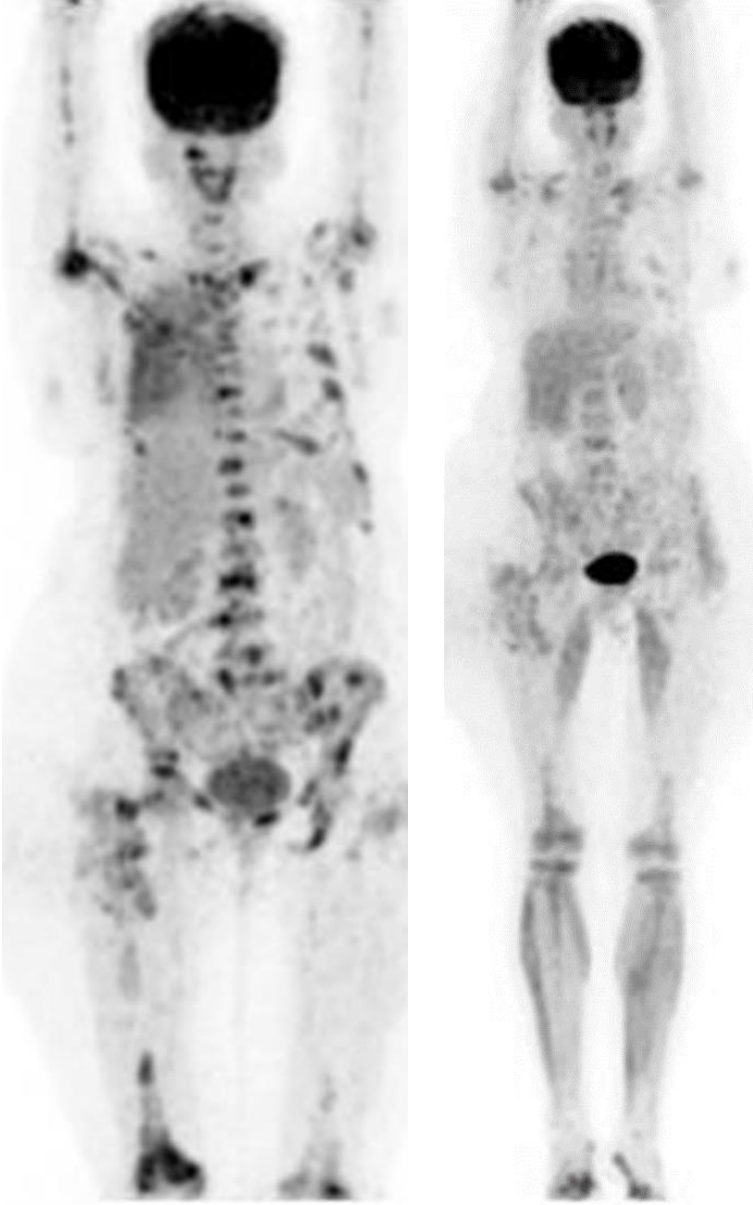
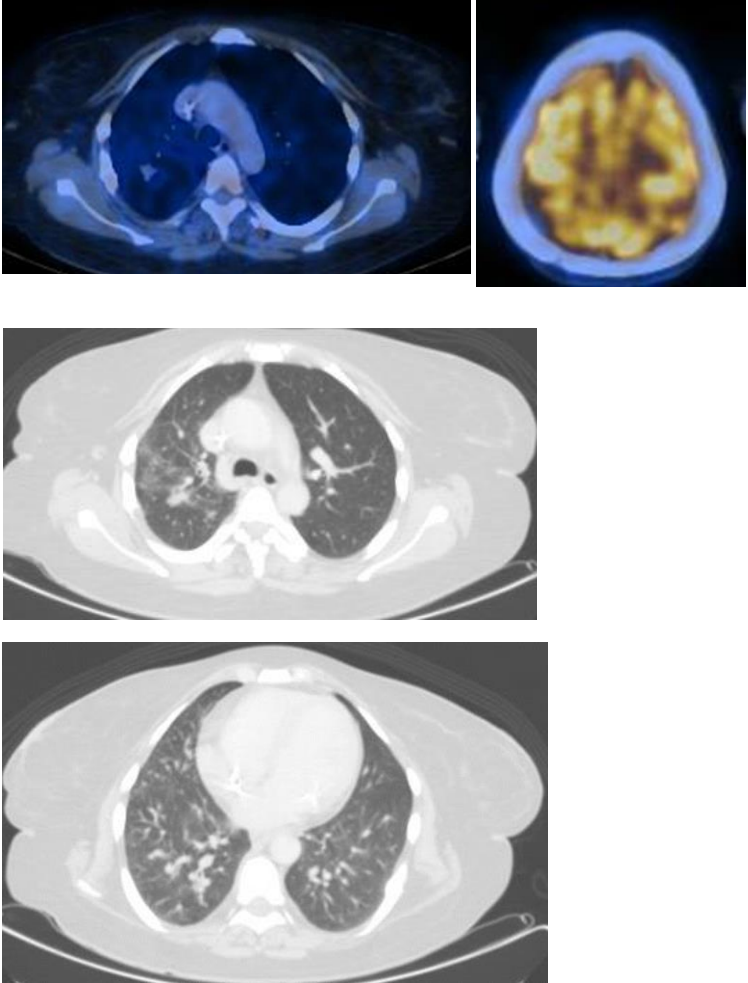


Bone mets

osteopetrosis



Feb 2025



# Osteopetrosis

- Syn – marble bone disease, Albers schonberg disease
- Hereditary disease of defective osteoclasts with sclerotic and thick bones which are fragile
- AR – infantile (generally still birth or early demise before adulthood, AD – benign (live longer)
- Presentation with multiple recurrent fractures, often transverse, with normal callus formation; radiographs reveal sclerotic lesions; bone in bone appearance; Erlenmeyer flask type deformity of the tubular bones, sandwich vertebrae and alternating radiolucent metaphyseal bands; lesions not to be confused with metastatic disease
- Rx - BMT